

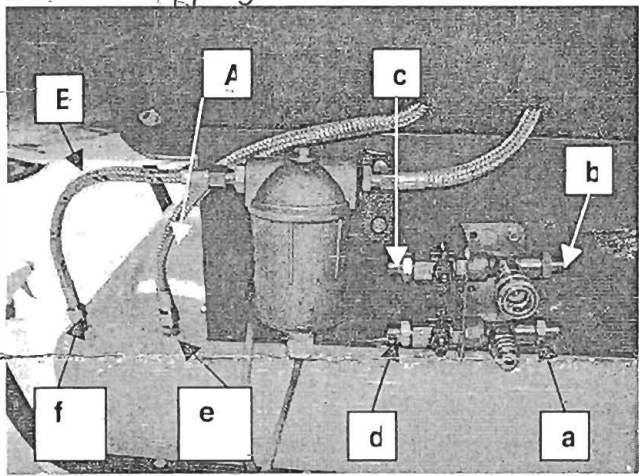
# Instructions to add "Connection kit to external tank" on your heater

Smoky Mountain Emporium  
www.smemporium.com  
office@smemporium.com

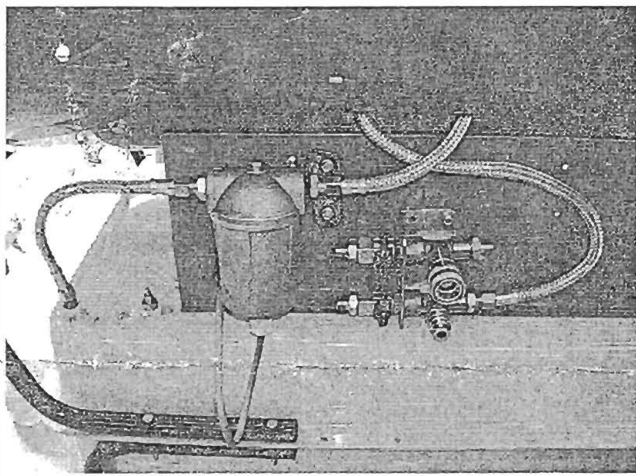
## Part lists:

- N. 4 self tapping screws
- N. 1 assembly support
- N. 1 diesel-oil tube 15" long (C)
- N. 1 diesel oil tube 23" mm long (D)

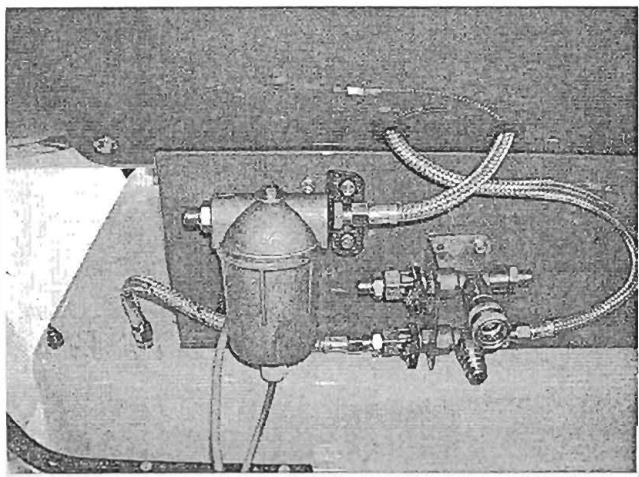
**Step 1:** put the external tank kit assembly as indicated by following picture, 3" right from the heated diesel filter, and fix it using the 4 self tapping screws.



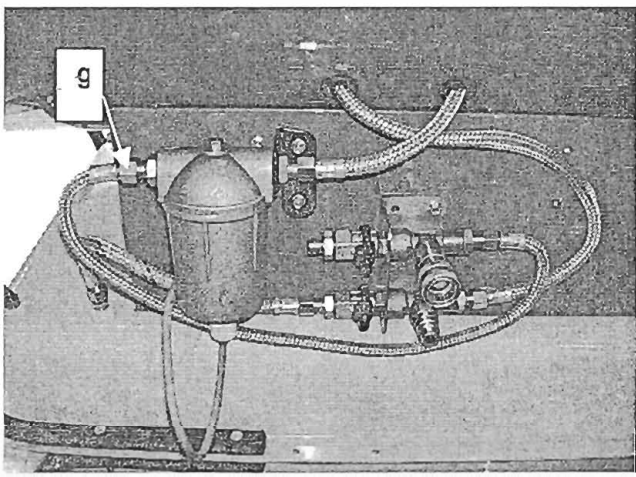
**Step 2:** disconnect return tube A and connect it on connection (a).



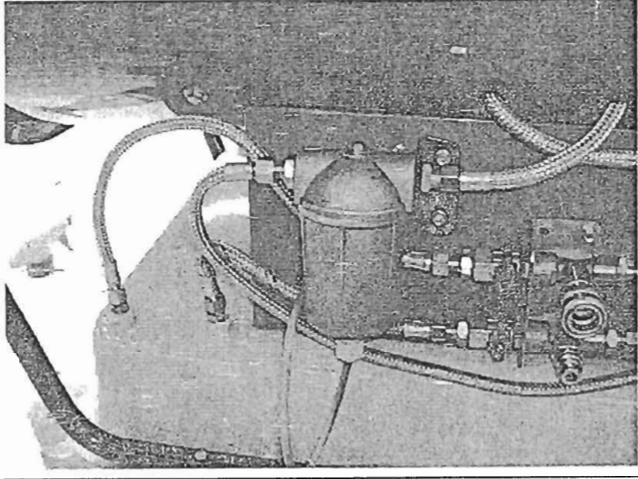
**Step 3:** disconnect completely suction tube B and connect it on gate (d) and gate (e).



**Step 4:** connect tube D it on gate (b) and gate (g).



Step 5: connect tube-C it on gate (c) and gate (f).



Step 6: before using the external, check both closure valves (E) and (F) be closed

